

SPECIFICATION SHEET

EWZ SERIES  **MULTIPURPOSE CONTROL**
1 OR 2 CHANNELS
24 DAY TIME SWITCH



APPLICATIONS

- Outdoor signs.
- Lighting security.
- Heating and air conditioning.

FEATURES

SCHEDULING:

20 ON & OFF set points

for individual programs for each day of the week. Minimum setting is 1 minute.

SunSet ASTRONOMIC:

Adjusts daily to changes in sunset times. Adjustable 10° - 60° Northern or Southern latitudes. Can be individually offset +/- 1-240 minutes from both sunset and sunrise times.

DAYLIGHT SAVING:

Automatic (can be omitted).

LEAP YEAR:

Automatic Compensation.

MANUAL OVERRIDE:

Until the next regularly scheduled ON or OFF, automatic operation then resumes.

CLOCK FORMAT:

AM/PM.

POWER OUTAGE BACKUP:

Permanent schedule retention. Supercapacitor provides 4 days of real time backup.

MOMENTARY OPTION:

For mechanically held contactors: Model EWZ201 only. Configure with simple jumper change for single-channel momentary operation.

SPECIFICATIONS

TIMING ACCURACY:

Line Frequency.

INPUT VOLTAGE:

120 - 277VAC, 50/60Hz (automatic detection).

TERMINAL RANGE:

#8 - #16AWG.

OPERATING TEMPERATURE:

-40 °F to 149 °F (-40 °C to 65 °C).

POWER CONSUMPTION:

6VA Max.

ENCLOSURE:

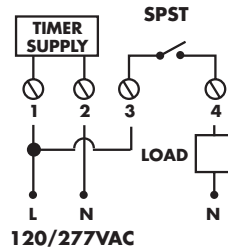
Polycarbonate Indoor/Outdoor NEMA 3R is standard with lockable hasp. Suffix -MB without enclosure and includes mounting bracket.

OPTIONS:

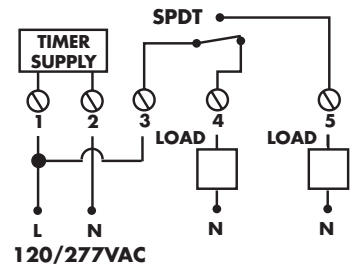
Suffix -Q Quartz crystal timing. Maintains accurate timing where 50 or 60 Hz is not consistent such as on-site generator produced power. Consult factory for minimum order size.

WIRING DIAGRAMS

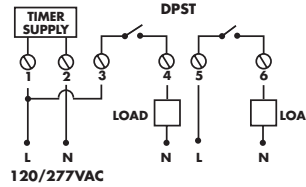
EWZ101



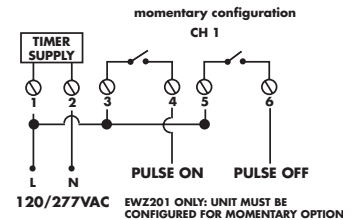
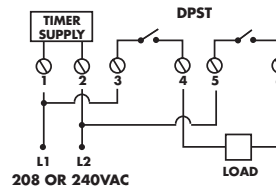
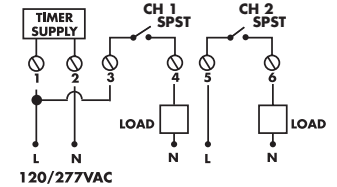
EWZ120



EWZ103



EWZ201



ORDERING INFO

CAT. NO.	UPC CODE	INPUT SUPPLY (VAC) 50/60Hz	NO. OF CHANNELS	OUTPUT DRY CONTACTS
EWZ101	82470	120-277	1	SPST
EWZ103	82473	120-277	1	DPST
EWZ120	82471	120-277	1	SPDT
EWZ201	82472	120-277	2	SPST
EWZ101-MB	82263	120-277	1	SPST
EWZ103-MB	82269	120-277	1	DPST
EWZ120-MB	82275	120-277	1	SPDT
EWZ201-MB	82281	120-277	2	SPST

CONTACT RATINGS

TYPE	EWZ101, EWZ103, EWZ201		EWZ120		
	VOLTAGE (VAC)	RATING NO	VOLTAGE (VAC)	RATING NO	NC
General Purpose	120-277	40A	120-277	30A	30A
Inductive	120-277	40A	120-277	30A	30A
Ballast	120	30A	120	30A	10A
	208-277	20A	208-277	20A	10A
Tungsten	120	15A	120	15A	2A
Pilot Duty	120-277	720VA	120-277	720VA	720VA
	120	1HP	120	1HP	1HP
	208	1 1/2HP	208	1 1/2HP	1 1/2HP
Motor	240-277	2HP	240-277	2HP	2HP
	28VDC	30A	28VDC	30A	30A