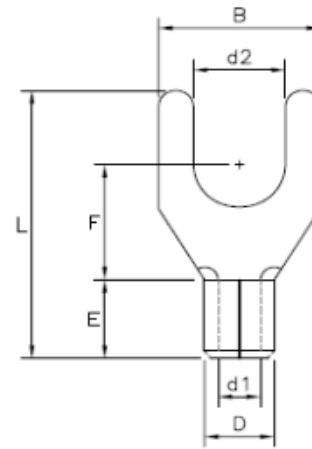


Non-Insulated Spade Terminals



Drawn - SD

Approved - KM

Material - Copper - Tin Plated

Title - Non-Insulated Spade Terminals



Part Number	Wire Range	Electrical Rating Max	d2	B	F	L	E	D	d1
S22-4	22-18 AWG	105C / 600 Volts	0.1100	0.2510	0.2300	0.6220	0.2600	0.1260	0.6700
S22-6	22-18 AWG	105C / 600 Volts	0.1710	0.3220	0.3500	0.6800	0.1800	0.1260	0.6700
S22-8	22-18 AWG	105C / 600 Volts	0.1670	0.3220	0.3500	0.7520	0.2550	0.1260	0.6700
S22-10	22-18 AWG	105C / 600 Volts	0.1970	0.3100	0.3600	0.7620	0.2770	0.1260	0.6700
S16-6	16-14 AWG	105C / 600 Volts	0.1440	0.2550	0.3050	0.6360	0.2030	0.1600	0.0970
S16-8	16-14 AWG	105C / 600 Volts	0.1700	0.2940	0.2800	0.6290	0.2560	0.1560	0.0880
S16-10	16-14 AWG	105C / 600 Volts	0.2070	0.3360	0.3450	0.6750	0.2000	0.1600	0.0980
S12-6	12-10 AWG	105C / 600 Volts	0.1440	0.3760	0.4040	0.7950	0.2550	0.2190	0.1350
S12-8	12-10 AWG	105C / 600 Volts	0.1700	0.3760	0.3900	0.8080	0.2570	0.2170	0.1350
S12-10	12-10 AWG	105C / 600 Volts	0.2080	0.3760	0.3600	0.7480	0.2450	0.2200	0.1350
S12-14	12-10 AWG	105C / 600 Volts	0.2610	0.4960	0.5400	1.0070	0.2590	0.2190	0.1350
S8-10	8 AWG	105C / 600 Volts	0.2140	0.4740	0.4350	0.9550	0.3330	0.2800	0.1830
S8-14	8 AWG	105C / 600 Volts	0.2580	0.4740	0.4400	0.9480	0.3250	0.2790	0.1830