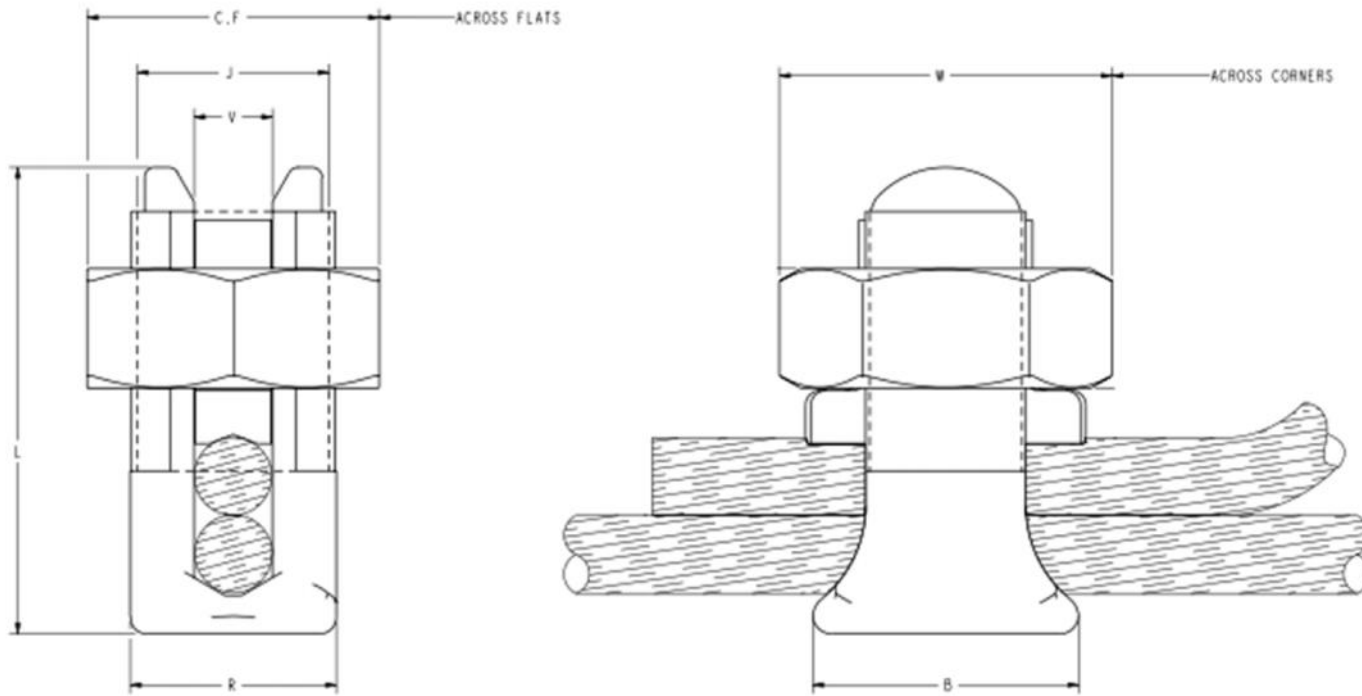


## All Purpose Type Split Bolts - N-1000SP



Drawn - SD

Approved - KM

Material - Copper / Finish: Tin Plated

Title - All Purpose Type Split Bolts



Item	Wire Range	B	C.F	J	L	R	V	W
N-1000SP	1000-250 MCM	2.100	2.560	2 1/8"	3.900	2.190	1.170	2.910