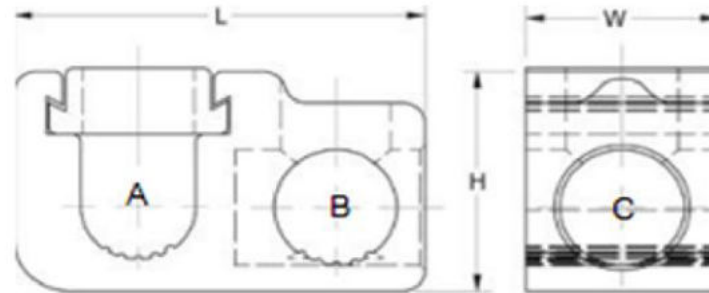


Parallel or "T" Tap Connectors



Drawn - SD

Approved - KM

Material - Aluminum

Title - Parallel or "T" Tap Connectors



Part Number	Conductor Range		Length	Width	Height	Wireway A Width	Wireway B Width	Wireway C Width
	Main	Tap						
GP-250-0	250 MCM-1/0 AWG	1/0-14 AWG	1.31	1.06	2.03	0.645	0.434	0.434