

CONNECTORS

Compression Connectors

Short Barrel Copper Lugs Two Hole with Peep Hole GL-N Series Cont'd

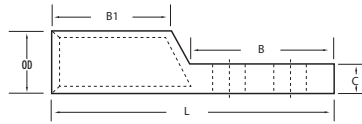
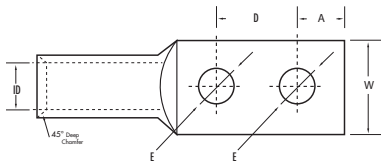


FEATURES

- Produced from high conductivity copper tubing.
- Peep hole allows easy inspection of the termination to assure complete cable insertion.
- Tin-plated to provide corrosion and low contact resistance.
- Marked with die index and color coded.
- Listed for 35KV maximum when properly install applications greater than 2000V, install to cable manufacturer voltage stress relief instructions.
- **Part numbers ending in "X" have no peep hole.**

SPECIFICATIONS

- UL486A Listed Wire Connector.
- UL467 Grounding & Bonding (Sizes 8 AWG - 3/0 AWG).
- cULus 155027.
- Max ampacity is based on NEC 310.15, insulation type, and conductor material. Please consult your current NEC manual..
- * CLASS B OR C BUILDING WIRE CU CABLE ONLY.
- **Temperature Rating:** 90 °C.
- **Voltage:** 600V max.
- 9CU.



***EXPANDED WIRE RANGE** when installed with NSI N12ID dieless compression tool.
UL Listed with other tools:

**FOR TOOL /DIE CRIMPING INFORMATION,
PLEASE SEE TABLE ON PAGE 87**

CAT. NO.	WIRE RANGE	EXPANDED WIRE RANGE*	COLOR CODE	BOLT SIZE (IN.)	MTG. HOLE SPACING (D) (IN.)	I.D. (IN.)	O.D. (IN.)	LENGTH (L) (IN.)	WIDTH (W) (IN.)	END OF CONN TO CTR. (A) (IN.)	TANG LENGTH (B) (IN.)	BARREL LENGTH (B1) (IN.)	TANG THICKNESS (C) (IN.)	MTG. HOLE DIA. (E) (IN.)	STD. CTN. QTY.
GL20N	2/0 AWG	2/0 - 4 AWG	Black	1/2	1.750	0.441	0.563	4.173	0.815	0.618	2.992	0.945	0.118	0.512	25
GL20N-38	2/0 AWG	2/0 - 4 AWG	Black	3/8	1.000	0.441	0.563	2.992	0.815	0.382	1.811	0.945	0.118	0.413	25
GL30N	3/0 AWG	3/0 - 2 AWG	Orange	1/2	1.750	0.492	0.622	4.291	0.902	0.618	2.992	0.984	0.126	0.512	25
GL30N-38	3/0 AWG	3/0 - 2 AWG	Orange	3/8	1.000	0.492	0.622	3.110	0.902	0.382	1.811	0.984	0.126	0.413	25
GL40N	4/0 AWG	4/0 - 1 AWG	Purple	1/2	1.750	0.547	0.689	4.291	1.000	0.618	2.992	0.984	0.134	0.512	25
GL40N-38	4/0 AWG	4/0 - 1 AWG	Purple	3/8	1.000	0.547	0.689	3.110	1.000	0.382	1.811	0.984	0.134	0.413	25
GL250N	250 MCM	250 MCM - 1/0 AWG	Yellow	1/2	1.750	0.594	0.752	4.409	1.091	0.618	2.992	1.063	0.150	0.512	25
GL250N-38	250 MCM	250 MCM - 1/0 AWG	Yellow	3/8	1.000	0.594	0.752	3.228	1.091	0.382	1.811	1.063	0.150	0.413	25
GL350N	350 MCM	350 MCM - 3/0 AWG	Red	1/2	1.750	0.701	0.874	4.528	1.276	0.618	2.992	1.102	0.165	0.512	12
GL350N-38	350 MCM	350 MCM - 3/0 AWG	Red	3/8	1.000	0.701	0.874	3.346	1.276	0.382	1.811	1.102	0.165	0.413	12
GL400N	400 MCM	400 MCM - 4/0 AWG	Blue	1/2	1.750	0.764	0.949	4.685	1.386	0.618	2.992	1.181	0.177	0.512	6
GL500N	500 MCM	500 - 250 MCM	Brown	1/2	1.750	0.839	1.063	4.882	1.539	0.618	2.992	1.378	0.217	0.512	6
GL500N-38	500 MCM	500 - 250 MCM	Brown	3/8	1.000	0.839	1.063	3.701	1.539	0.382	1.811	1.378	0.217	0.413	6
GL600N	600 MCM	600 - 250 MCM	Green	1/2	1.750	0.925	1.189	5.039	1.717	0.618	2.992	1.496	0.252	0.512	6
GL750N	750 MCM	750 - 500 MCM	Black	1/2	1.750	1.043	1.311	5.512	1.902	0.618	2.992	1.850	0.268	0.512	3