

# CONNECTORS

## Compression Connectors

### Long Barrel Stacking Copper Lugs

#### SL-N Series

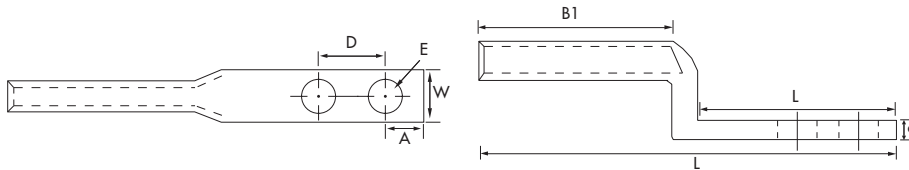


#### SPECIFICATIONS

- UL486A Listed Wire Connector.
- Max ampacity is based on NEC 310.15, insulation type, and conductor material. Please consult your current NEC manual..
- \* CLASS B OR C BUILDING WIRE CU CABLE ONLY.
- **Temperature Rating:** 90 °C. A9CU.
- **Rating:** 600V.

#### FEATURES

- Designed for use with the L-N Series.
- Produced from high conductivity copper tubing for heavy duty applications.
- Tin-Plated to provide corrosion resistance.
- Marked with die index and color coded.
- For use with LN Series.
- Listed for 35KV maximum when properly installed.



**\*EXPANDED WIRE RANGE** when installed with NSI N12ID dieless compression tool.  
 UL Listed with other tools:  
**FOR TOOL/DIE CRIMPING INFORMATION, PLEASE SEE TABLE ON PAGE 87**

CAT. NO.	WIRE RANGE	EXPANDED WIRE RANGE*	COLOR CODE	BOLT SIZE (IN.)	MTG. HOLE SPACING (D) (IN.)	LENGTH (L) (IN.)	WIDTH (W) (IN.)	END CONN. TO CTR. (A) (IN.)	TANG LENGTH (B) (IN.)	BARREL LENGTH (B1) (IN.)	STD. CTN. QTY.
SL40N	4/0 AWG	4/0 - 1 AWG	Purple	0.500	1.750	5.173	0.997	0.640	2.863	2.034	25
SL250N	250 MCM	250 MCM - 1/0 AWG	Yellow	0.500	1.750	5.500	1.160	0.640	2.870	2.220	25
SL300N	300 MCM	300-2/0 AWG	White	0.500	1.750	5.750	1.159	0.640	2.924	2.477	25
SL350N	350 MCM	350 MCM - 3/0 AWG	Red	0.500	1.750	6.000	1.271	0.640	2.876	2.58	25
SL500N	500 MCM	500 - 250 MCM	Brown	0.500	1.750	6.000	1.547	0.640	2.781	2.862	6
SL600N	600 MCM	600 - 250 MCM	Green	0.500	1.750	6.750	1.697	0.640	2.760	3.460	6
SL750N	750 MCM	750 - 500 MCM	Black	0.500	1.750	6.750	1.884	0.640	2.845	3.480	3