

CONNECTORS

Compression Connectors

Bi-Metallic Pin Terminals

PT Series



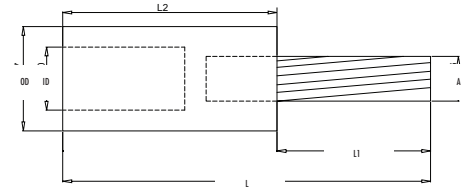
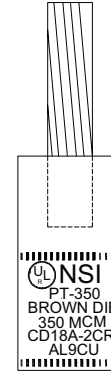
SPECIFICATIONS

- UL486A/B Listed for Wire Connector.
- Temperature Rating: 90 °C. AL9.
- Crimp Tool: N1240.
- Voltage: 600V max.



FEATURES

- Designed to facilitate termination of aluminum conductors.
- Pin: Stranded copper, tin plated.
- Supplied with PVC insulating cover.
- Connector bores are coated with oxide inhibitor.



CONNECTORS

CAT. NO.	WIRE RANGE	COLOR CODE	PIN SIZE	O.D.	I.D.	PIN DIA. (A)	LENGTH (L)	PIN LENGTH (L1)	BODY LENGTH (L2)	STD. CTN. QTY.
PT6	6 AWG	—	# 8	0.639	0.186	0.144	2.125	0.875	1.250	25
PT4	4 AWG	Tan	# 6	0.630	0.236	0.188	2.450	0.913	1.540	25
PT2	2 AWG	Tan	# 4	0.641	0.311	0.228	2.440	0.913	1.527	25
PT1	1 AWG	Tan	# 3	0.630	0.350	0.279	2.539	1.003	1.530	10
PT1/0	1/0 AWG	Tan	# 2	0.900	0.366	0.287	3.405	1.259	2.140	10
PT2/0	2/0 AWG	White	# 1	0.900	0.429	0.322	3.342	1.251	2.090	10
PT3/0	3/0 AWG	White	1/0	0.900	0.484	0.362	3.598	1.456	2.140	10
PT4/0	4/0 AWG	White	2/0	0.900	0.547	0.405	3.523	1.464	2.050	10
PT250	250 MCM	Brown	3/0	1.160	0.653	0.440	3.858	1.551	2.300	10
PT300	300 MCM	Brown	4/0	1.160	0.653	0.523	4.086	1.696	2.389	10
PT350	350 MCM	Brown	4/0	1.157	0.700	0.496	4.082	1.704	2.377	10
PT400	400 MCM	Pink	250	1.330	0.759	0.582	4.362	1.984	2.377	10
PT500	500 MCM	Pink	350	1.330	0.759	0.681	4.192	1.842	2.350	10
PT600	600 MCM	Yellow	350	1.503	0.921	0.688	4.960	1.897	3.051	3
PT750	750 MCM	Yellow	500	1.500	1.015	0.787	5.007	2.003	3.015	3