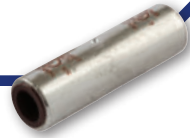


CONNECTORS

Compression Connectors

Dual Rated, Aluminum Splice

ASC-T Series

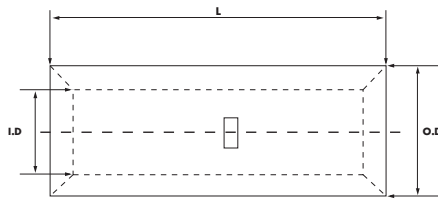


FEATURES

- Produced from high conductivity aluminum tubing.
- Center stop assures proper cable installation.
- Electro-tin plated for corrosion resistance.
- Color coded and marked with die index information.
- Pre-filled with oxide inhibitor and capped with color coded cap.
- Listed for 35KV maximum when properly installed to cable manufactures specifications.

SPECIFICATIONS

- cULus Listed for Wire Connector.
- UL486A/B Listed for Wire Connector.
- UL Listed to 35kV when properly installed to cable manufactures specifications.
- **Temperature Rating:** 90 °C. AL9CU
- **Crimp Tool:** N1240, N121D.
- **Voltage:** 600V max. (2000V max. per UL486B).



***EXPANDED WIRE RANGE** when installed with NSI N121D dieless compression tool.
UL Listed with other tools:

FOR TOOL/DIE CRIMPING INFORMATION, PLEASE SEE TABLE ON PAGE 90

CAT. NO.	WIRE RANGE	EXPANDED WIRE RANGE*	COLOR CODE	O.D.	I.D.	LENGTH (L)	STD. CTN. QTY.
ASC8T	8 AWG	8 AWG	Blue	0.297	0.146	1.750	100
ASC6T	6 AWG	6-8 AWG	Gray	0.339	0.197	1.630	24
ASC4T	4 AWG	4-6 AWG	Green	0.437	0.248	2.000	24
ASC2T	2 AWG	2-6 AWG	Pink	0.528	0.307	2.378	24
ASC1T	1 AWG	1-6 AWG	Gold	0.528	0.347	2.378	24
ASC1/OT	1/0 AWG	1/0-6 AWG	Tan	0.630	0.390	2.500	24
ASC2/OT	2/0 AWG	2/0-4 AWG	Olive	0.689	0.440	2.630	12
ASC3/OT	3/0 AWG	3/0-2 AWG	Ruby	0.760	0.480	2.878	12
ASC4/OT	4/0 AWG	4/0-1 AWG	White	0.839	0.550	3.130	12
ASC250T	250 MCM	250 MCM-1/0 AWG	Red	0.920	0.590	3.248	12
ASC300T	300 MCM	300 MCM-2/0 AWG	Blue	1.010	0.650	3.248	6
ASC350T	350 MCM	350MCM-3/0 AWG	Brown	1.120	0.720	3.878	6
ASC400T	400 MCM	400MCM-4/0 AWG	Green	1.190	0.760	4.878	6
ASC500T	500 MCM	500-250 MCM	Pink	1.320	0.840	5.000	6
ASC600T	600 MCM	600-250 MCM	Black	1.440	0.920	5.130	6
ASC750T	750 MCM	750-500 MCM	Yellow	1.600	1.030	5.378	3
ASC1000T	1000 MCM	—	Brown	1.844	1.153	5.250	3