

CONNECTORS

Compression Connectors

Aluminum, Dual Rated, One Hole Standard Barrel AL Series

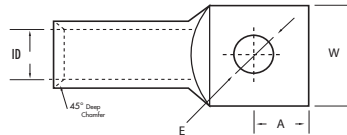
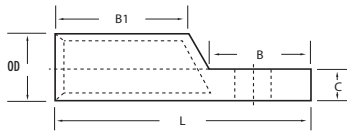


FEATURES

- Produced from high conductivity aluminum tubing.
- Electro-tin plated for corrosion resistance.
- Color coded and marked with die index information.
- Pre-filled with oxide inhibitor and capped with color coded cap.
- Listed for 35KV maximum when properly installed to cable manufactures specifications.

SPECIFICATIONS

- cULus Listed for Wire Connector.
- UL486A/B Listed for Wire Connector.
- UL Listed to 35kV when properly installed to cable manufactures specifications.
- **Temperature Rating:** 90 °C. AL9CU
- **Crimp Tool:** N1240, N121D.
- **Voltage:** 600V max. (2000V max. per UL486B).



***EXPANDED WIRE RANGE** when installed with NSI N121D dieless compression tool.
UL Listed with other tools:

FOR TOOL/DIE CRIMPING INFORMATION, PLEASE SEE TABLE ON PAGE 90

CAT. NO.	WIRE RANGE	EXPANDED WIRE RANGE*	COLOR CODE	BOLT SIZE	BARREL O.D.	BARREL I.D.	LENGTH (L)	WIDTH (W)	TANG LENGTH (A)	TANG LENGTH (B)	BARREL LENGTH (B1)	TANG THICKNESS (C)	MTG. HOLE DIA. (E)	STD. CTN. QTY.
AL8-14	8 AWG	8 AWG	Blue	1/4	0.302	0.182	1.549	0.410	0.231	0.645	0.550	0.114	0.260	24
AL6-14	6 AWG	6-8 AWG	Gray	1/4	0.339	0.201	2.008	0.567	0.378	0.878	0.858	0.098	0.248	24
AL4-14	4 AWG	4-6 AWG	Green	1/4	0.441	0.252	2.307	0.567	0.378	0.878	1.098	0.189	0.248	24
AL4-38	4 AWG	4-6 AWG	Green	3/8	0.441	0.252	2.390	0.650	0.378	0.878	1.098	0.150	0.409	24
AL2-14	2 AWG	2-6 AWG	Pink	1/4	0.532	0.311	2.500	0.709	0.378	0.878	1.201	0.217	0.248	24
AL2-38	2 AWG	2-6 AWG	Pink	3/8	0.532	0.311	2.500	0.709	0.378	0.878	1.201	0.217	0.409	24
AL1-14	1 AWG	1-6 AWG	Gold	1/4	0.532	0.350	2.500	0.728	0.378	0.878	1.201	0.177	0.248	24
AL1/0-38	1/0 AWG	1/0-6 AWG	Tan	3/8	0.630	0.390	2.807	0.847	0.500	0.929	1.201	0.240	0.409	24
AL1/0-48	1/0 AWG	1/0-6 AWG	Tan	1/2	0.630	0.390	2.807	0.847	0.020	0.929	1.201	0.240	0.508	24
AL2/0-38	2/0 AWG	2/0-4 AWG	Olive	3/8	0.689	0.441	2.807	0.937	0.500	1.118	1.299	0.240	0.409	12
AL2/0-48	2/0 AWG	2/0-4 AWG	Olive	1/2	0.689	0.441	2.807	0.937	0.500	1.118	1.299	0.240	0.508	12
AL3/0-38	3/0 AWG	3/0-2 AWG	Ruby	3/8	0.760	0.480	3.000	1.028	0.500	1.118	1.402	0.280	0.409	12
AL3/0-48	3/0 AWG	3/0-2 AWG	Ruby	1/2	0.760	0.480	3.000	1.028	0.500	1.118	1.402	0.280	0.508	12
AL4/0-38	4/0 AWG	4/0-1 AWG	White	3/8	0.839	0.551	3.429	1.150	0.559	1.307	1.402	0.287	0.409	12
AL4/0-48	4/0 AWG	4/0-1 AWG	White	1/2	0.839	0.551	3.429	1.150	0.559	1.307	1.402	0.287	0.508	12
AL250-48	250 MCM	250 MCM-1/0 AWG	Red	1/2	0.921	0.591	3.500	1.260	0.630	1.307	1.500	0.319	0.508	12
AL300-48	300 MCM	300 MCM-2/0 AWG	Blue	1/2	1.012	0.650	4.000	1.370	0.630	1.500	1.598	0.347	0.508	6
AL350-48	350 MCM	350MCM-3/0 AWG	Brown	1/2	1.118	0.721	4.248	1.520	0.689	1.500	1.902	0.390	0.508	6
AL400-48	400 MCM	400MCM-4/0 AWG	Green	1/2	1.189	0.760	4.677	1.606	0.689	1.500	2.299	0.417	0.508	6
AL500-48	500 MCM	500-250 MCM	Pink	1/2	1.319	0.839	4.748	1.787	0.748	1.500	2.500	0.469	0.508	6
AL500-58	500 MCM	500-250 MCM	Pink	5/8	1.319	0.839	4.748	1.787	0.748	1.500	2.500	0.469	0.669	6
AL600-48	600 MCM	600-250 MCM	Black	1/2	1.441	0.921	5.118	1.957	0.748	1.870	2.598	0.508	0.508	3
AL600-58	600 MCM	600-250 MCM	Black	5/8	1.441	0.921	5.118	1.957	0.748	1.870	2.598	0.508	0.669	3
AL750-48	750 MCM	750-500 MCM	Yellow	1/2	1.598	1.032	6.118	2.189	0.937	2.000	3.201	0.547	0.508	3
AL750-58	750 MCM	750-500 MCM	Yellow	5/8	1.598	1.032	6.118	2.189	0.937	2.000	3.201	0.547	0.669	3
AL1000-58	1000 MCM	—	Brown	5/8	1.833	1.173	6.719	2.500	1.000	2.500	2.562	0.688	0.669	1