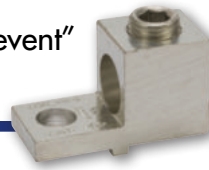


CONNECTORS

Mechanical Connectors

Aluminum, Dual Rated, Single & Double "Turn-Prevent" TP Series

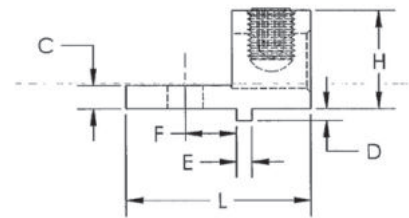
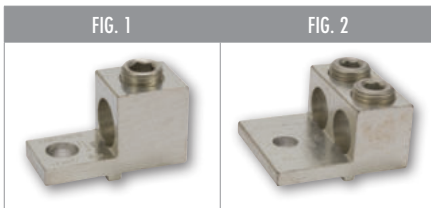
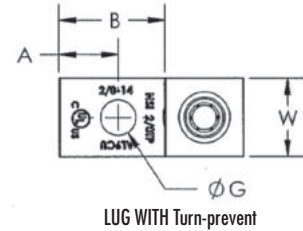


SPECIFICATIONS

- UL Listed for Wire Connector.
- UL486A/B Listed. AL9CU.
- Temperature Rating: Single/Double TP Lugs 90 °C.
- Voltage: 600V (2000V max. per UL486B).

FEATURES

- Large size set-screw connectors with wire holes stacked on top of each other to minimize the width of the connector.
- Made of 6061T-6 aluminum alloy.
- Electro-tin plated for low contact resistance.
- For use with copper or aluminum conductors.
- Turn prevent node located on bottom prevents rotation of lug.



CAT. NO.	FIG. NO.	WIRE RANGE	LENGTH (L) (IN.)	WIDTH (W) (IN.)	HEIGHT (H) (IN.)	TANG LENGTH (A) (IN.)	TANG LENGTH (B) (IN.)	TANG THICKNESS (C) (IN.)	TURN PVT. LENGTH (D) (IN.)	TURN PVT. THICKNESS (E) (IN.)	MTG. HOLE TO TURN PVT. (F) (IN.)	HOLE DIA. (IN.)	MAX TORQUE VALUE (IN./LBS.)	HEX WRENCH SIZE (IN.)	MTG. BOLT SIZE (IN.)	STD. CTN. QTY.
2/0TP	1	2/0-14 AWG	1.470	0.880	1.130	0.470	0.840	0.190	0.090	0.130	0.410	0.280	120	3/16	1/4	50
300TP	1	300 MCM-6 AWG	2.000	0.990	1.130	0.380	1.000	0.250	0.090	0.190	0.490	0.440	330	5/16	7/16	24
350TP	1	350 MCM-6 AWG	2.250	0.990	1.130	0.500	1.250	0.250	0.090	0.190	0.630	0.340	400	5/16	5/16	20
2-350TP	2	(2) 350 MCM-6 AWG	2.250	1.920	1.130	0.500	1.125	0.250	0.090	0.187	0.630	0.406	400	5/8	3/8	8
600TP	1	600 MCM-2 AWG	3.180	1.380	1.510	0.880	1.930	0.380	0.090	0.190	0.630	0.530	550	3/8	1/2	6
2-600TP	2	(2) 600 MCM-2 AWG	3.180	2.410	1.510	0.880	1.930	0.380	0.130	0.190	0.630	0.530	550	3/8	1/2	4