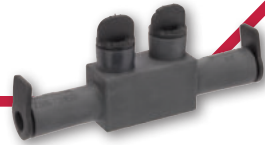


POLARIS™ EDGE

Pre-Insulated Connectors

Submersible Connectors

ISPB, ISPBO, ISPBS Series



SPECIFICATIONS

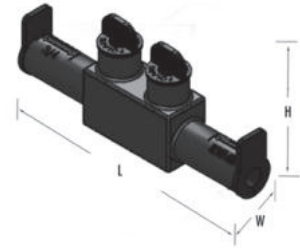
- UL Listed 486D Sealed Wire Connector (Dry Location).
- Meets or exceeds ANSI C119.4 Class A specifications.
- **Temperature Rating/Voltage:** AL9CU.
Cold temperature rated to -45 °C, rated 600V, 90 °C.
- **Wire Type:** Dual rated for copper or aluminum conductors.
- **Installation Instructions:** See page 38 for extra illustrations and detailed installation information.

FEATURES

- Submersible to 6' damp/wet location, direct bury (UL486D).
- Manufactured from high strength 6061-T6 aluminum alloy, providing premium electrical and mechanical performance.
- Radial tipped set-screws reduce conductor strand damage, and the range taking design allows for many sizes and types of conductors – all in one connector.
- Encapsulated in rubber with a nominal thickness of 125 mils. and high dielectric strength.
- Abrasion, chemical and UV resistant.
- Will not support combustion.



Figure varies by number of wire ports.



| CAT. NO. | FIG. NO. | NO. OF PORTS | COLOR | WIRE RANGE | LENGTH (L) (IN.) | WIDTH (W) (IN.) | HEIGHT (H) (IN.) | MAX. TORQUE VALUE (IN./LBS.) | HEX/WRENCH SIZE (IN.) | STD. CTN. QTY. |
|-----------|----------|--------------|-------|------------|------------------|-----------------|------------------|------------------------------|-----------------------|----------------|
| ISPBS2/0 | 1 | 2 | Black | 2/0-#14 | 5.050 | 0.880 | 2.100 | 120 | 3/16 | 1 |
| ISPBS350 | 1 | 2 | Black | 350-#12 | 8.830 | 1.250 | 3.380 | 360 | 5/16 | 1 |
| ISPB2/0-2 | 2 | 2 | Black | 2/0-#14 | 1.930 | 2.650 | 2.100 | 120 | 3/16 | 1 |
| ISPB2/0-3 | 2 | 3 | Black | 2/0-#14 | 2.790 | 2.650 | 2.100 | 120 | 3/16 | 1 |
| ISPB2/0-4 | 2 | 4 | Black | 2/0-#14 | 3.650 | 2.650 | 2.100 | 120 | 3/16 | 1 |
| ISPB2/0-6 | 2 | 6 | Black | 2/0-#14 | 5.370 | 2.650 | 2.100 | 120 | 3/16 | 1 |
| ISPBO2/0 | 3 | 3 | Black | 2/0-#14 | 2.790 | 4.180 | 2.100 | 120 | 3/16 | 1 |