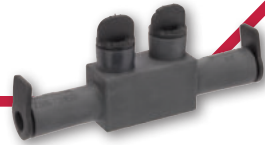


POLARIS™ EDGE

Pre-Insulated Connectors

Submersible Connectors

ISPB, ISPBO, ISPBS Series



SPECIFICATIONS

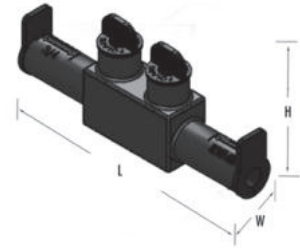
- UL Listed 486D Sealed Wire Connector (Dry Location).
- Meets or exceeds ANSI C119.4 Class A specifications.
- **Temperature Rating/Voltage:** AL9CU.
Cold temperature rated to -45 °C, rated 600V, 90 °C.
- **Wire Type:** Dual rated for copper or aluminum conductors.
- **Installation Instructions:** See page 38 for extra illustrations and detailed installation information.

FEATURES

- Submersible to 6' damp/wet location, direct bury (UL486D).
- Manufactured from high strength 6061-T6 aluminum alloy, providing premium electrical and mechanical performance.
- Radial tipped set-screws reduce conductor strand damage, and the range taking design allows for many sizes and types of conductors – all in one connector.
- Encapsulated in rubber with a nominal thickness of 125 mils. and high dielectric strength.
- Abrasion, chemical and UV resistant.
- Will not support combustion.



Figure varies by number of wire ports.



CAT. NO.	FIG. NO.	NO. OF PORTS	COLOR	WIRE RANGE	LENGTH (L) (IN.)	WIDTH (W) (IN.)	HEIGHT (H) (IN.)	MAX. TORQUE VALUE (IN./LBS.)	HEX/WRENCH SIZE (IN.)	STD. CTN. QTY.
ISPBS2/0	1	2	Black	2/0-#14	5.050	0.880	2.100	120	3/16	1
ISPBS350	1	2	Black	350-#12	8.830	1.250	3.380	360	5/16	1
ISPB2/0-2	2	2	Black	2/0-#14	1.930	2.650	2.100	120	3/16	1
ISPB2/0-3	2	3	Black	2/0-#14	2.790	2.650	2.100	120	3/16	1
ISPB2/0-4	2	4	Black	2/0-#14	3.650	2.650	2.100	120	3/16	1
ISPB2/0-6	2	6	Black	2/0-#14	5.370	2.650	2.100	120	3/16	1
ISPBO2/0	3	3	Black	2/0-#14	2.790	4.180	2.100	120	3/16	1