

# GROUNDING

## Ground Clamps

### Heavy Duty Direct Burial

G-S-DB, G-S-BS Series

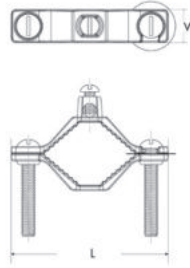


#### SPECIFICATIONS

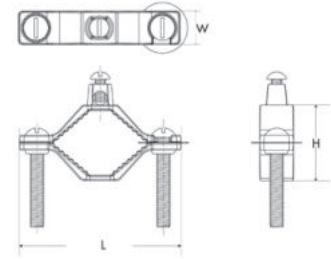
- cULus Listed 467 Grounding & Bonding.
- UL467 Listed, Grounding & Bonding.

#### FEATURES

- Screws are 304 stainless steel.
- \*G-S-DB are available with silicon bronze screws by adding suffix of -SB.



G-1-S DB



G-2-S DB

CAT. NO.	FIG. NO.	CERTIFICATION	PIPE SIZE (IPS)	REBAR SIZE (IN.)	GROUND WIRE BOLT SIZE (IN.)	GROUND CLAMP BOLT SIZE (IN.)	GROUND WIRE RANGE (IN.)	LENGTH (L) (IN.)	WIDTH (W) (IN.)	HEIGHT (H) (IN.)	STD. CTN. QTY.
G-1-SDB*	1	UL	1/2-1	—	1/4"-20 x 1/2"	1/4"-20 x 1.50"	10 SOL – 2 STR	2.280	0.650	1.400	20
G-2-SDB*	1	UL	1 1/4-2	—	1/4"-20 x 1/2"	5/16"-18 x 2"	10 SOL – 2 STR	3.600	0.750	1.690	10



Scan QR code  
for mobile access to  
Grounding drawings.