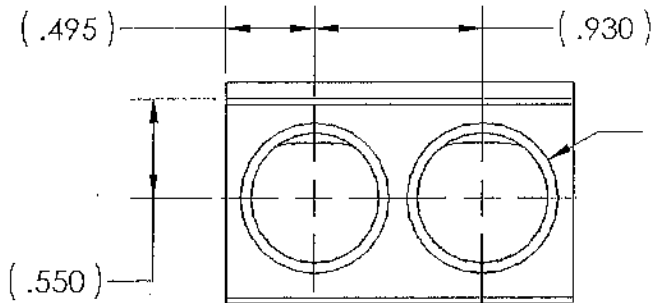
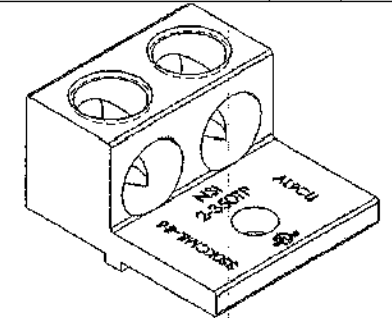


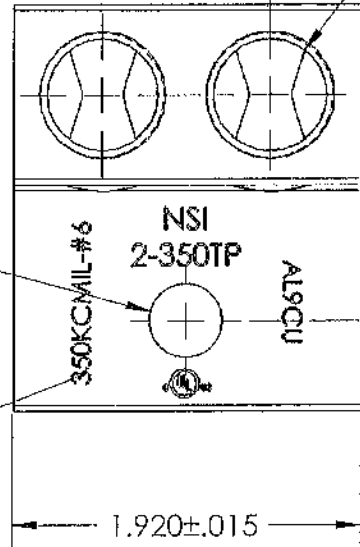
PROGRAM: SOLIDWORKS VER: 2010		FILE NAME: 2-350TP.SLDPRF/SLDDRW	
REVISIONS			
REV.	DESCRIPTION	DATE	LAST SAVED BY
A	INITIAL RELEASE	1/18/2011	inil



2X ϕ .718 ∇ 1.000
 \checkmark ϕ .830 X 90°, NEAR SIDE



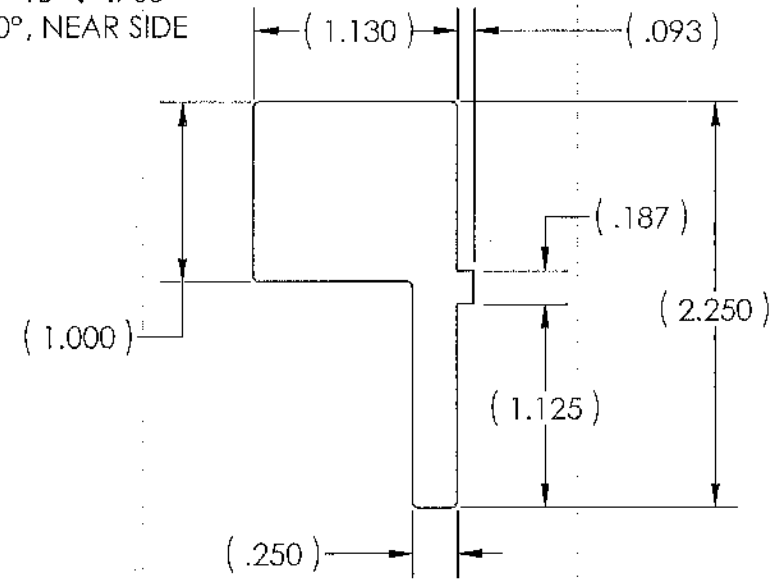
2X ϕ .625 ∇ .885
 11/16-16 UN - 1B ∇ .765
 \checkmark ϕ .708 X 90°, NEAR SIDE



ϕ .406 THRU ALL
 STAMP AS SHOWN

.500 ± .015

1.920 ± .015



- NOTES:
1. .0002-.0004 THICK TIN PLATE, AFTER PUNCH OPERATION.
 2. MOUNT HOLE MUST BE WITHIN .015 OF CENTERLINE OF 1.920 DIMENSION.
 3. PARTS MUST BE CLEAN AND FREE OF ALL BURRS.

PROPRIETARY AND CONFIDENTIAL	

NSI TORK		NSI INDUSTRIES, LLC USA • 800.321.5847 • www.nsiindustries.com	
UNLESS OTHERWISE SPECIFIED:		TITLE:	
DIMENSIONS ARE IN INCHES		NSI 350 MCM, 2 PORT AR MECH. LUG	
TOLERANCES:			
FRACTIONAL = \pm 1/64			
ANGULAR = \pm 2°			
.XX = \pm 0.010		DWG. NO.	REV
.XXX = \pm 0.005		2-350TP	A
NAME	DATE	SCALE: 1:1	
DRAWN BY: KM	01/18/2011	SHEET: 1 OF 1	
DESIGNED BY:	01/18/2011		
MATERIAL: 6061-T6511 ALUMINUM			