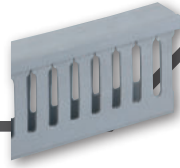




# WIRE MANAGEMENT

## Standard Slot Panel Channel

PC-LS Series



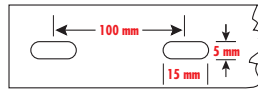
### SPECIFICATIONS

- CSA and UL Recognized.
- **Maximum Service Temperature:** 85 °C (185 °F), Tested to UL File up to 50 °C (122 °F). 94V-0 Rated.

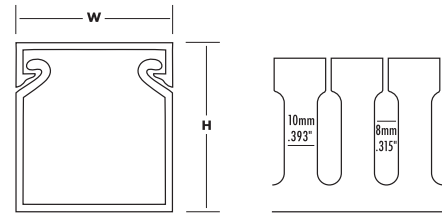
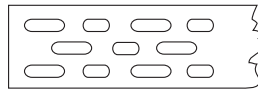
### FEATURES

- Made from high-impact, self-extinguishing, warp-proof PVC for routing wires.
- Restricted slot opening is designed to retain wires and allow for breakout when required. Individual wires are easily traced and removed when necessary.
- Scored sidewalls allow for easy break-off of panel channel sections.
- All sizes are supplied with mounting holes and non-slip, snap-on and off covers.
- Optional adhesive backing is available.
- For other sizes, please contact NSi.

Mounting holes: For widths up to 2.5"



Mounting holes: For widths over 2.5"



Finger width = 10 mm, slot width = 8 mm.

CAT. NO.	COLOR	NOMINAL SIZE	LENTH (FT.)	STD. PKG. QTY.	STD. CTN. QTY.
PC1010-LS	Grey	1 x 1	6'	6'	72'
PC1010-LS-W	White	1 x 1	6'	6'	72'
PC1015-LS	Grey	1 x 1 1/2	6'	6'	72'
PC1020-LS	Grey	1 x 2	6'	6'	72'
PC1020-LS-W	White	1 x 2	6'	6'	72'
PC1030-LS	Grey	1 x 3	6'	6'	72'
PC1030-LS-W	White	1 x 3	6'	6'	72'
PC1040-LS	Grey	1 x 4	6'	6'	72'
PC1040-LS-W	White	1 x 4	6'	6'	72'
PC1515-LS	Grey	1 1/2 x 1 1/2	6'	6'	72'
PC1515-LS-W	White	1 1/2 x 1 1/2	6'	6'	72'
PC1520-LS	Grey	1 1/2 x 2	6'	6'	72'
PC1520-LS-W	White	1 1/2 x 2	6'	6'	72'
PC1530-LS	Grey	1 1/2 x 3	6'	6'	72'
PC1530-LS-W	White	1 1/2 x 3	6'	6'	72'
PC1540-LS-W	White	1 1/2 x 4	6'	6'	72'
PC2010-LS	Grey	2 x 1	6'	6'	72'
PC2010-LS-W	White	2 x 1	6'	6'	72'
PC2020-LS	Grey	2 x 2	6'	6'	72'