



TERMINAL BLOKS™

Hardware Options

FQC, DR Series

SPECIFICATIONS

FQC Series

- Voltage: 30AMP, 600V Max.

DR Series

- CSA.
- UL Recognize.

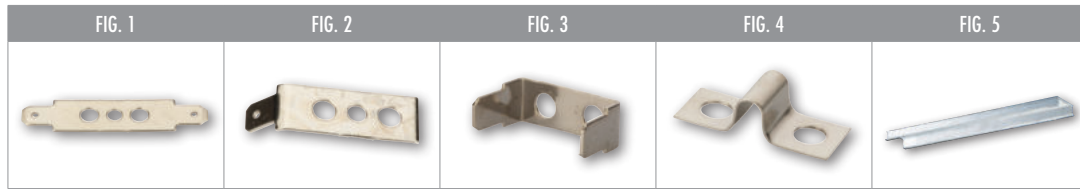
FEATURES

FQC Series

- Nickel plated.
- 0.250 x 0.30 tab size.
- 22-14AWG wire size.

DR Series

- Made from 35mm unplated 6061-T6 Aluminum alloy providing for a strong, lightweight rail for mounting sockets, terminal blocks or other electro-mechanical devices.
- Comes supplied with oval holes 1.1 cm, approximately x 0.4 cm apart.
- Standard 10mm height allows for ease of installation vs. traditional 7.5mm height.

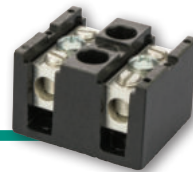


CAT. NO.	FIG. NO.	DESCRIPTION	HEIGHT	LENGTH	STD. CTN. QTY.
FQC-00	1	Quick Disconnect – 0° Flat	–	–	10
FQC-45	2	Quick Disconnect – 45° Bend	–	–	10
FQC-90	3	Quick Disconnect – 90° Bend	–	–	10
J-30	4	30 AMP Jumper	–	–	10
DR3910	5	For Mounting Sockets, Terminal Blocks, Or Other Electro-Mechanical Devices	10 mm	39.3"	10

TERMINAL BLOKS™

Splicer/Reducers 75 Amps, 600V

TBS Series



SPECIFICATIONS

- Temperature Rating: 150 °C.
- Voltage: 75AMP, 600V Max.

FEATURES

- Terminal Bloks™ power terminal blocks are made from high conductivity bodies and will accept either copper or aluminum conductors on the line side.
- The bases are manufactured from high strength phenolic compound.
- 2-14 AWG.

CAT. NO.	NO. OF POLES	WIRE RANGE	LENGTH	HEIGHT	WIDTH	STD. CTN. QTY.
TBS2-2	2	2-14 AWG CU or AL	1.750	1.250	1.500	6
TBS2-3	3	2-14 AWG CU or AL	2.380	1.250	1.500	6