

DESCRIPTION

The EEL LED Flush Mount Ceiling Light Fixtures features a painted white finish and a white acrylic diffuser. It is perfect for commercial and residential applications. Ideal for hallways, kitchens and bedrooms.

SPECIFICATION FEATURES

Construction

Die formed 22 gauge galvanized steel painted high gloss white finish
2 sizes: 12-inch and 14-inch

Controls

The CL Ceiling Light series is powered by Ultrasave Drivers

Electrical

Long Life LED System complete with electrical driver to deliver the optimal performance. LED's available in a 3000K with a typical CRI: 80. Rated for 94,000 hours. Electronic drivers are available in 120 or 120/277 Volt applications

Driver and Module Access

Drivers can be accessed by removing the lens from the housing

Finish

22 gauge galvanized steel and high gloss enamel paint finish ensures maximum bonding and rust inhibition

Shielding

White acrylic lens offers visual comfort

Compliance

Modules and Drivers are UL recognized components and indoor luminaries are cULus listed

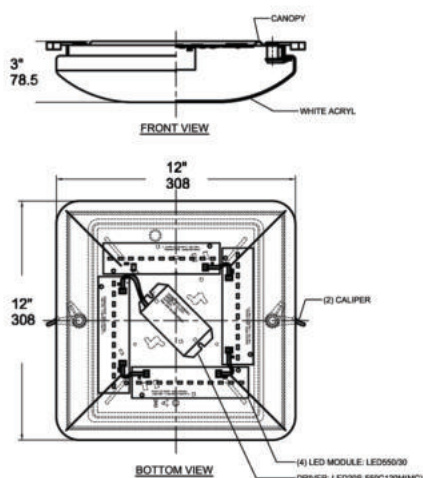
Warranty

5 years



**LED
CEILING LIGHTS**
12-inch and 14-inch

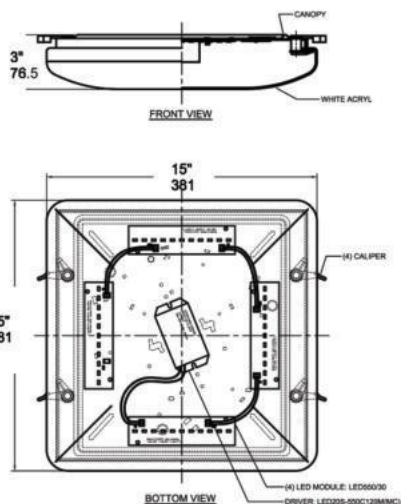
powered by
ULTRASAVE



CL-T6512-6-LED04

Dimension

mm | 308(W) x 308(L) x 78.5(H)
inch | 12.3"(W) x 12.3"(L) x 3"(H)





CL-T6513-6-LED04

Dimension

mm | 381(W) x 381(L) x 78.5(H)
inch | 15"(W) x 15"(L) x 3"(H)

ORDERING CODE, ENERGY AND PERFORMANCE DATA

	Model No.	Delivered Lumens (lm)	Input Watts (W)	Voltage (V)	Colour Temp. (K)	Efficacy (lm/W)	Status
	CL-T6512-6-LED04 12-inch	2170	23	120 / 120M	3000K	94	Stock
	CL-T6513-6-LED04 14-inch	2170	23	120 / 120M	3000K	94	Stock

SHIPPING DATA

Model No.

CL-T6512-6-LED04

CL-T6513-6-LED04

Weight

2kg / 4.4lbs

2.3kg / 5.1lbs