

# The Power of Illumination

[www.bplusl.com](http://www.bplusl.com)

## Nuance 6 Multi-use ballast with EOL For single compact or linear lamps up to 28 watt



The NU6-1128 EOL series of electronic ballasts provide the flexibility required by modern lighting fixture designs. The size of a match box, the Nuance 6 ballast, will operate a wide range of compact and linear lamps to suit many of your 120V applications. The NU6-1128 EOL are instant start electronic ballasts designed to operate one CFL or linear lamp up to 28 watt with noiseless and flicker-free operation. This model is equipped with End of Lamp Life (EOL) auto-reset protection circuit. Once the lamp filament is spent. The ballast will stop working and thus protect the spent lamp from overheating and charring the lamp base. This feature, allows for lamp replacement without power interruption.

Encapsulated in a match box size plastic casing, these Nuance 6 ballasts can replace almost any magnetic ballast installed in your lighting fixtures. B+L Technologies' electronic ballasts do not require an independent starter eliminating lamp ignition problems and flickering, and are more energy efficient.

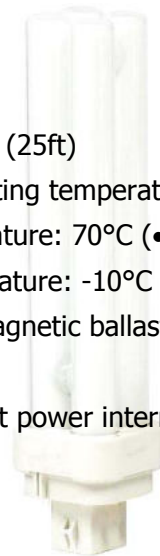
### LIST OF APPROVED LAMPS

Twin (4 pins)	Quad (4 pins)	Triple (4 pins)	2D	T5	T8	T12
1 x 5W	1 x 10W	1 x 13W	1 x 10W	1 x F4	1 x F13	1 x F14
1 x 7W	1 x 13W	1 x 18W	1 x 16W	1 x F6	1 x F14	1 x F15
1 x 9W	1 x 18W	1 x 26W	1 x 21W	1 x F13	1 x F15	1 x F20
1 x 11W	1 x 26W		1 x 28W	1 x F14	1 x F16	
1 x 13W				1 x F21	1 x F17	
1 x 18W				1 x F28	1 x F18	
1 x 24W					1 x F25	

### General Specifications

- ✓ Very small match box size plastic casing
- ✓ Will power many types of lamps
- ✓ Input 120VAC 50/60Hz, 0.28A max
- ✓ Instant start, ideal for infrequent on-off
- ✓ Noiseless operation, sound rating A
- ✓ End-of-lamp-life auto reset protection
- ✓ UL (Class P) outdoor Type 1
- ✓ Open cathode voltage: 415V
- ✓ Certifications: UL or UR, and CSA
- ✓ Light weight
- ✓ Flicker-free
- ✓ Remote mounting: 7.6m (25ft)
- ✓ Maximum ambient operating temperature: 40°C
- ✓ Maximum casing temperature: 70°C (•tc)
- ✓ Minimum starting temperature: -10°C
- ✓ Energy efficiency over magnetic ballast
- ✓ High power factor >0.9
- ✓ Can be re-lamped without power interruption
- ✓ Choice of casing format

1-800-361-1400



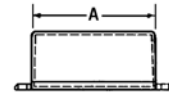
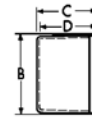
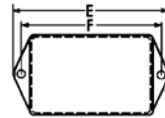
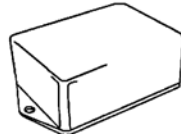
## Ordering Information

MODEL	No LAMP	MAX. INPUT CURRENT (A)	CASING FORMAT	WIRE POSITION	UL	RU	CSA
NU6-1128-PSX/E	1	0.28	PLASTIC, STANDARD	SIDE	✓		✓
NU6-1128-PCX/E		0.28	PLASTIC, STANDARD	BOTTOM	✓		✓
NU6-1128-NT/E		0.28	PLASTIC, STANDARD NO TAB	SIDE		✓	✓
NU6-1128-MSO/E		0.28	MYLAR, STANDARD	SIDE		✓	✓
NU6-1128-PSS/E		0.28	PLASTIC, SLIM	SIDE	✓		✓
NU6-1128-MSN/E		0.28	MYLAR, SLIM	MYLAR, SLIM	SIDE		✓

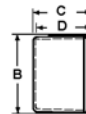
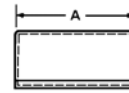
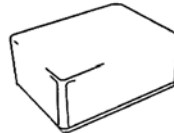
\* UL (Class P) outdoor Type 1

## Dimensions

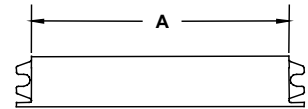
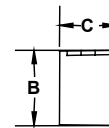
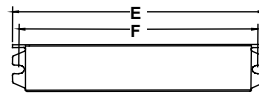
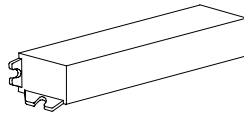
**Format PSX**, white plastic



**Format NT**, white plastic

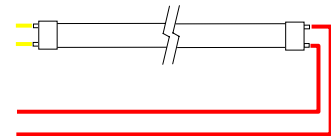
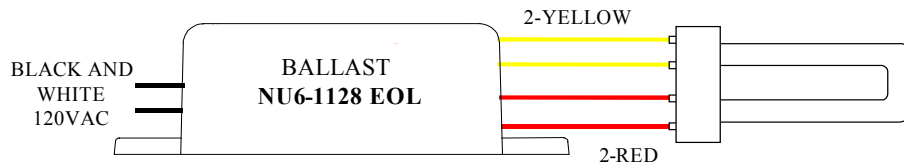


**Format PSS**, white plastic



Format	A	B	C	D	E	F
PSX	2.00"	1.50"	1.00"	0.93"	2.88"	2.50"
NT	2.00"	1.50"	1.00"	0.93"	-----	-----
MSO	1.97"	1.48"	-----	0.85"	-----	-----
PSS	3.76"	1.00"	0.78"	-----	4.20"	4.05"
MSN	3.70"	0.86"	0.69"	-----	-----	-----

## Cabling Diagrams



### WIRING NOTE:

DO NOT JOIN THE 2 YELLOW WIRES OR THE 2 RED WIRES TOGETHER. EACH WIRE MUST GO TO THE APPROPRIATE SOCKET PIN INDIVIDUALLY

## Warranty

Consult Factory for warranty information



3570 Charter Park Drive  
San Jose, CA 95136  
USA  
Tel.: (408) 269-7884  
1 (800) 361-1400  
Fax.: (408) 269-7638  
[www.bplust.com](http://www.bplust.com)  
[info@bplust.com](mailto:info@bplust.com)