



The smart choice for maximum flexibility

SmartMate

Offering maximum versatility, the Philips Advance family of SmartMate ballasts for 4-pin compact fluorescent lamps drive a broad range of quad and triple-tube, circline, 2D, and long twin-tube lamps. SmartMate ballasts' energy efficient design, compact and lightweight housing, and user-friendly features make these ballasts an ideal choice for fixture manufacturers, retrofitters, and MRO replacement.

Benefits

- Reduces SKU requirements and inventory costs
- Enhances wiring accuracy and ease of assembly/installation
- Eliminates interference with infrared systems, anti-theft devices, or other electronic equipment

Features

- IntelliVolt (120-277V) input voltage range
- 1 or 2 Lamp operation
- Color-coded connectors
- Operates multiple lamp wattages

Application

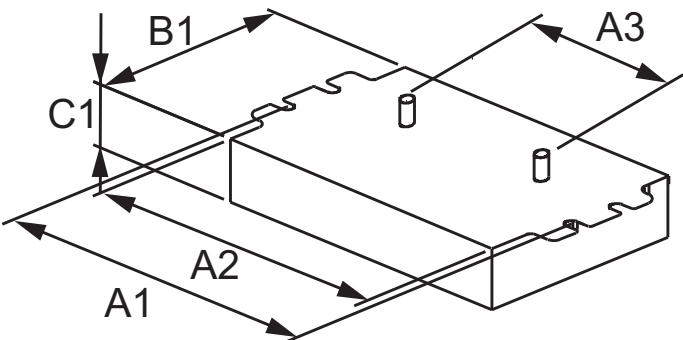
- Restaurants, reception areas, conference and meeting rooms, hotel and convention center ballrooms, or when combined with CFL lamps, as an energy efficient replacement for incandescent down-lighting systems

PHILIPS

Related products



Dimensional drawing

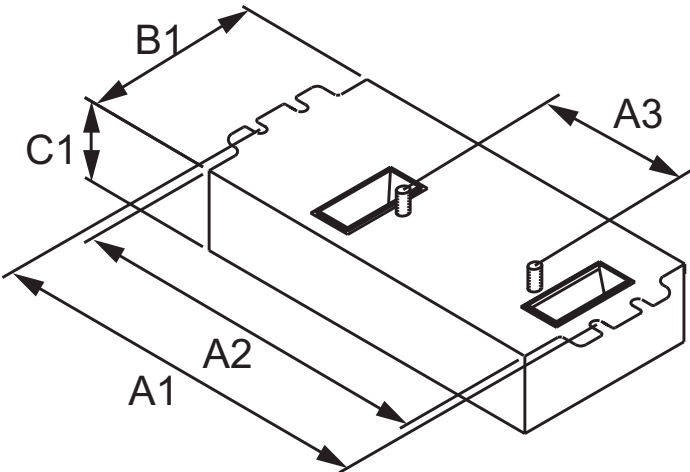


Studs for -BS models only
-LD models do not have
mounting studs

SMARTMATE ELE BALLAST (2) 42W CFL (4-PIN) 120-277V

Product	A1 (Norm)	A2 (Norm)	A3 (Norm)	B1 (Norm)	C1 (Norm)
ELE BALLAST (2) 42W CFL (4-PIN) 120-277V	4.55	4.20	2.00	3.00	1.29
ELE BALLAST (2) 42W CFL (4-PIN) 120-277V	4.55	4.20	2.00	3.00	1.29
ELE BAL (2) 42W CFL (4-PIN) 120/277V KIT	4.55	4.20	2.00	3.00	1.29
ELE BALLAST (2) 42W CFL (4-PIN) 120-277V	4.55	4.20	2.00	3.00	1.29
ELE BALLAST (2) 42W CFL (4-PIN) 120-277V	4.55	4.20	2.00	3.00	1.29

Dimensional drawing

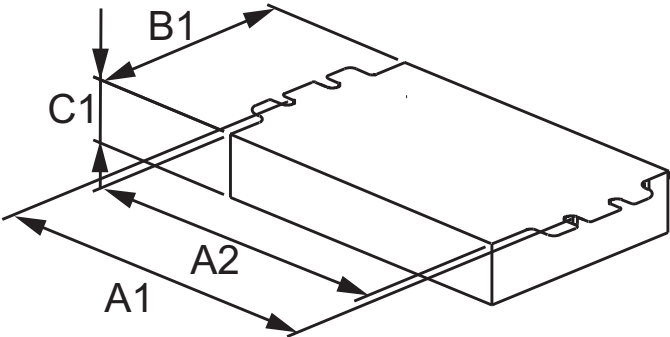


SMARTMATE ELE BAL (2) 13W CFL (4-PIN) 120-277V KIT

Product	A1 (Norm)	A2 (Norm)	A3 (Norm)	B1 (Norm)	C1 (Norm)
ELE BAL (2) 13W CFL (4-PIN) 120-277V KIT	4.60	4.20	2.00	3.00	1.29
ELE BAL (2) 18W CFL (4-PIN) 120-277V KIT	4.60	4.20	2.00	3.00	1.29
ELE BALLAST (2) 26W CFL (4-PIN) 120-277V	4.60	4.20	2.00	2.40	0.98
ELE BALLAST (2) F80T5HO 120-277V	4.60	4.20	2.00	2.40	0.98
ELE BALLAST (2) 13W CFL (4-PIN) 120-277V	4.60	4.20	2.00	2.40	0.98
ELE BALLAST (2) 18W CFL (4-PIN) 120-277V	4.60	4.20	2.00	2.40	0.98
ELE BALLAST (2) 26W CFL (4-PIN) 120-277V	4.60	4.20	2.00	2.40	0.98
ELE BALLAST (1) 38W 2D (4-PIN) 120-277V	4.60	4.20	2.00	2.40	0.98
ELE BALLAST (2) 13W CFL (4-PIN) 120-277V	4.60	4.20	2.00	2.40	0.98
ELE BALLAST (2) 13W CFL 4-PIN 120-277V	4.60	4.20	2.00	2.40	0.98
ELE BALLAST (2) 18W CFL 4-PIN 120-277V	4.60	4.20	2.00	2.40	0.98
ELE BALLAST (2) 26W CFL 4-PIN 120-277V	4.60	4.20	2.00	2.40	0.98

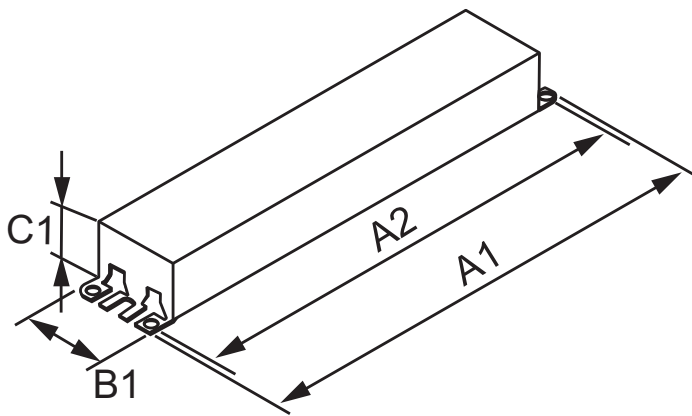
SMARTMATE ELE BALLAST (2) 70W CFL (4-PIN) 120-277V

Product	A1 (Norm)	A2 (Norm)	A3 (Norm)	B1 (Norm)	C1 (Norm)
ELE BALLAST (2) 70W CFL (4-PIN) 120-277V	7.79	7.00	-	3.00	1.29



Studs for -BS models only
-LD models do not have
mounting studs

Dimensional drawing



CENTIUM ELE BALLAST (3) 40W CFL (4-PIN) 120-277V

Product	A1 (Norm)	A2 (Norm)	A3 (Norm)	B1 (Norm)	C1 (Norm)
ELE BALLAST (3) 40W CFL (4-PIN) 120-277V	9.5	8.90	-	1.7	1.18
ELE BALLAST (3) 40W CFL (4-PIN) 120-277V	9.5	8.90	-	1.7	1.18
ELE BALLAST (2) 40W CFL (4-PIN) 120-277V	9.5	8.90	-	1.7	1.18
ELE BALLAST (2) 40W CFL (4-PIN) 120-277V	9.5	8.90	-	1.7	1.18
ELE BALLAST (1) 40W CFL (4-PIN) 120-277V	9.5	8.90	-	1.7	1.18
ELE BALLAST (1) 40W CFL (4-PIN) 120-277V	9.5	8.90	-	1.7	1.18

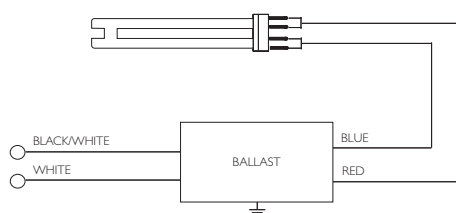
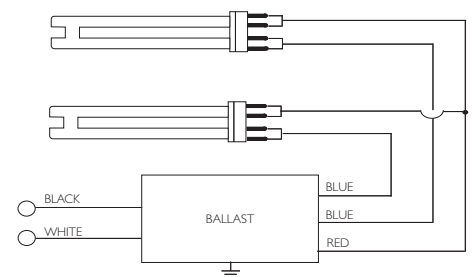
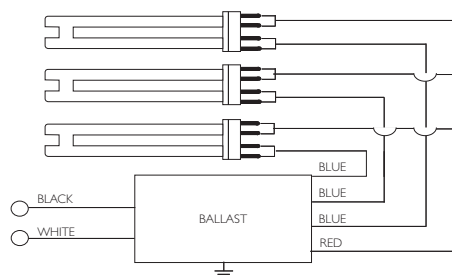
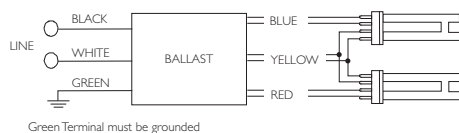
General Characteristics

Product number	Full product name	Lamp Type	Number of Lamps	Input Voltage	Line Frequency	Housing	Product number	Full product name	Lamp Type	Number of Lamps	Input Voltage	Line Frequency	Housing
ICN3TTP40SC35I	ELE BALLAST (3) 40W CFL (4-PIN) 120-277V	FT40W/ 2G11	2/3 piece	120-277 V	50/60 Hz	SC	ICF2S26H1LDK	ELE BALLAST (2) 26W CFL (4-PIN) 120-277V	CFQ26W/ G24Q	1/2 piece	120-277 V	50/60 Hz	H1
ICN3TTP40SC35M	ELE BALLAST (3) 40W CFL (4-PIN) 120-277V	FT40W/ 2G11	2/3 piece	120-277 V	50/60 Hz	SC	ICF2S42M2LDK	ELE BAL (2) 42W CFL (4-PIN) 120/277V KIT	CFTR42W/ GX24Q	1/2 piece	120-277 V	50/60 Hz	M2
ICN2TTP40SC35I	ELE BALLAST (2) 40W CFL (4-PIN) 120-277V	FT40W/ 2G11	1/2 piece	120-277 V	50/60 Hz	SC	ICF2S42M2LD35M	ELE BALLAST (2) 42W CFL (4-PIN) 120-277V	CFTR42W/ GX24Q	1/2 piece	120-277 V	50/60 Hz	M2
ICN2TTP40SC35M	ELE BALLAST (2) 40W CFL (4-PIN) 120-277V	FT40W/ 2G11	1/2 piece	120-277 V	50/60 Hz	SC	ICF2S26H1LD35M	ELE BALLAST (2) F80T5HO 120-277V	CFQ26W/ G24Q	1/2 piece	120-277 V	50/60 Hz	H1
ICN1TTP40SC35I	ELE BALLAST (1) 40W CFL (4-PIN) 120-277V	FT40W/ 2G11	1 piece	120-277 V	50/60 Hz	SC	ICF2S42M2BS35M	ELE BALLAST (2) 42W CFL (4-PIN) 120-277V	CFTR42W/ GX24Q	1/2 piece	120-277 V	50/60 Hz	M2
ICN1TTP40SC35M	ELE BALLAST (1) 40W CFL (4-PIN) 120-277V	FT40W/ 2G11	1 piece	120-277 V	50/60 Hz	SC	ICF2S13M1BS35M	ELE BALLAST (2) 13W CFL (4-PIN) 120-277V	CFQ13W/ G24Q	1/2 piece	120-277 V	50/60 Hz	H1
ICF2S13H1LDK	ELE BAL (2) 13W CFL (4-PIN) 120-277V KIT	CFQ13W/ G24Q	1/2 piece	120-277 V	50/60 Hz	H1	ICF2S18M1BS35M	ELE BALLAST (2) 18W CFL (4-PIN) 120-277V	CFQ18W/ G24Q	1/2 piece	120-277 V	50/60 Hz	M1
ICF2S18H1LDK	ELE BAL (2) 18W CFL (4-PIN) 120-277V KIT	CFQ18W/ G24Q	1/2 piece	120-277 V	50/60 Hz	H1	ICF2S26M1BS35M	ELE BALLAST (2) 26W CFL (4-PIN) 120-277V	CFQ26W/ G24Q	1/2 piece	120-277 V	50/60 Hz	M1

Operating Characteristics

Product number	Full product name	Lamp Type	Number of Lamps	Input Voltage	Line Frequency	Hou	Product number	Full product name	Max THD
ICF1D38H1LD35M	ELE BALLAST (1) 38W 2D (4-PIN) 120-277V	CFS38W/ GR10Q	1 piece	120-277 V	50/60 Hz	H1	ICN3TTP40SC35I	ELE BALLAST (3) 40W CFL (4-PIN) 120-277V	10 %
							ICN3TTP40SC35M	ELE BALLAST (3) 40W CFL (4-PIN) 120-277V	10 %
							ICN2TTP40SC35I	ELE BALLAST (2) 40W CFL (4-PIN) 120-277V	10 %
							ICN2TTP40SC35M	ELE BALLAST (2) 40W CFL (4-PIN) 120-277V	10 %
							ICN1TTP40SC35I	ELE BALLAST (1) 40W CFL (4-PIN) 120-277V	10 %
ICF2S13H1LD35M	ELE BALLAST (2) 13W CFL (4-PIN) 120-277V	CFQ13W/ G24Q	1/2 piece	120-277 V	50/60 Hz	H1	ICN1TTP40SC35M	ELE BALLAST (1) 40W CFL (4-PIN) 120-277V	10 %
							ICF2S13H1LDK	ELE BAL (2) 13W CFL (4-PIN) 120-277V KIT	10 %
							ICF2S18H1LDK	ELE BAL (2) 18W CFL (4-PIN) 120-277V KIT	10 %
							ICF2S26H1LDK	ELE BALLAST (2) 26W CFL (4-PIN) 120-277V	10 %
ICF2S70M4LD35M	ELE BALLAST (2) 70W CFL (4-PIN) 120-277V	CFTR70W/ GX24Q	2 piece	120-277 V	50/60 Hz	M4	ICF2S42M2LDK	ELE BAL (2) 42W CFL (4-PIN) 120/277V KIT	10 %
							ICF2S42M2LD35M	ELE BALLAST (2) 42W CFL (4-PIN) 120-277V	10 %
							ICF2S26H1LD35M	ELE BALLAST (2) F80T5HO 120-277V	10 %
							ICF2S42M2BS35M	ELE BALLAST (2) 42W CFL (4-PIN) 120-277V	10 %
ICF2S4290CM2BS35M	ELE BALLAST (2) 42W CFL (4-PIN) 120-277V	CFTR42W/ GX24Q	1/2 piece	120-277 V	50/60 Hz	M2	ICF2S13M1BS35M	ELE BALLAST (2) 13W CFL (4-PIN) 120-277V	10 %
							ICF2S18M1BS35M	ELE BALLAST (2) 18W CFL (4-PIN) 120-277V	10 %
							ICF2S26M1BS35M	ELE BALLAST (2) 26W CFL (4-PIN) 120-277V	10 %
							ICF1D38H1LD35M	ELE BALLAST (1) 38W 2D (4-PIN) 120-277V	10 %
ICF2S4290CM2LD35M	ELE BALLAST (2) 42W CFL (4-PIN) 120-277V	CFTR42W/ GX24Q	1/2 piece	120-277 V	50/60 Hz	M2	ICF2S13H1LD35M	ELE BALLAST (2) 13W CFL (4-PIN) 120-277V	10 %
							ICF2S70M4LD35M	ELE BALLAST (2) 70W CFL (4-PIN) 120-277V	10 %
							ICF2S4290CM2BS35M	ELE BALLAST (2) 42W CFL (4-PIN) 120-277V	10 %
							ICF2S4290CM2LD35M	ELE BALLAST (2) 42W CFL (4-PIN) 120-277V	10 %
ICF2S13M1BSQS35M	ELE BALLAST (2) 13W CFL 4-PIN 120-277V	CFQ13W/ G24Q	1/2 piece	120-277 V	50/60 Hz	M1	ICF2S13M1BSQS35M	ELE BALLAST (2) 13W CFL 4-PIN 120-277V	10 %
							ICF2S18M1BSQS35M	ELE BALLAST (2) 18W CFL 4-PIN 120-277V	10 %
							ICF2S26M1BSQS35M	ELE BALLAST (2) 26W CFL 4-PIN 120-277V	10 %
ICF2S18M1BSQS35M	ELE BALLAST (2) 18W CFL 4-PIN 120-277V	CFQ18W/ G24Q	1/2 piece	120-277 V	50/60 Hz	M1			
ICF2S26M1BSQS35M	ELE BALLAST (2) 26W CFL 4-PIN 120-277V	CFQ26W/ G24Q	1/2 piece	120-277 V	50/60 Hz	M1			

Wiring data





© 2014 Koninklijke Philips N.V. (Royal Philips)
All rights reserved.

Specifications are subject to change without notice. Trademarks are the property of Koninklijke Philips N.V. (Royal Philips) or their respective owners.

www.philips.com/lighting

2014, March 18
data subject to change