



Mark 7 0-10V

MARK 7 0-10V ELE DIM BAL (2) 26W CFL (4-PIN) 120-277V

The Mark 7 0–10V series of dimmable electronic ballasts offer maximum versatility by incorporating separate control leads for use with a wide array of controllers, including occupancy sensors, daylight harvesting controls, and building management systems from more than 40 manufacturers. When paired with linear fluorescent and 4-pin compact fluorescent lamps, these ballasts optimize the benefits of such popular sustainable lighting techniques as daylight harvesting, occupancy sensing, and load shedding to satisfy the need for an affordable, flexible and versatile controllable lighting solution.

Product data

• General Characteristics

Lamp Type	CFQ26W/G24Q
Number of Lamps	1/2 piece
Input Voltage	120-277 V
Line Frequency	50/60 Hz
Ballast Type	Dimmable Fluorescent
Base Model	IZT2S26M5BS
Housing	M5
Housing Dimensions	4.98" x 3.0" x 1.18"
Housing Material	Metal
Suitable for Outdoor use?	Yes
Starting Method	Programmed Start
Family Name	Mark 7 0-10V

• Operating Characteristics

Automatic restart	Yes
Ignition time	1.5 s
Min. Input Watts	13 (min) W
Max. Input Watts	55 (max) W
Min. Ballast Factor	0.03 (min) -
Max. Ballast Factor	1 (max) -
Ballast Efficacy Factor	1.82 -
Power Factor	0.99
Lamp Current Crest Factor	1.6 -
Sound Rating	A
Max THD	10 %

• Wiring Characteristics

Color input terminals	BLK, WHT, VLT & GRY
Color output terminals	RED, YEL & BLU
Connector type	Poke-In
Wire Striplength	0.375 mm

Control Wire Gauge	18AWG
Lamp Connection	Series
Wire Gauge	18AWG
Wire Length by Color	No wires
Wire Type	Solid
Allowed Wiring Config(Remote)	No
Allowed Wiring Config(Tandem)	No
Allowed Wiring Config(Through)	No
Max Dist. Ball to Lamp(Remote)	No Remote
Max Dist. Ball to Lamp(Tandem)	No Tandem
Max Dist. Ball to Lamp(Through)	No Through

• System Chars on driver level

Rated Lamp Watts	26W
------------------	-----

• Temperature Characteristics

T-case maximum	70 C
----------------	------

• Product Dimensions

Length A1	4.55 in
Length A2	4.20 in
Length A3	2.00 in
Width B1	3.00 in
Height C1	1.29 in

PHILIPS

• Approval & Application Chars

EMC Immunity	FCC Consumer
Approbation Marks	UL, CSA, RoHS
UL Listed	Yes
CSA certificate	Yes
CEC Listing	Yes
CEE Rated	No
Circle E logo	No
CSA E	No
cUL certificate	No
Energy Star	No
FIDE Certificate	No
NEMA Premium	No
NOM certificate	No
RoHS Compliant	Yes
SASO Certificate	No

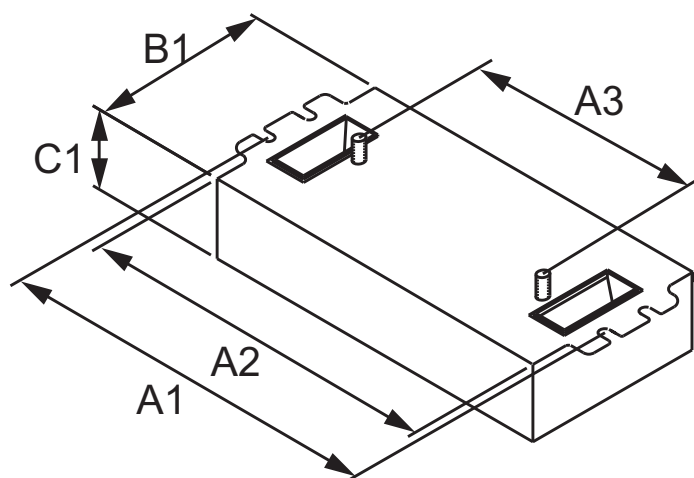
UL Recognized

No

• Product Data

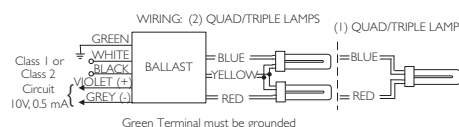
Product number	IZT2S26M5BS35M
Full product name	ELE DIM BAL (2) 26W CFL (4-PIN) 120-277V
Short product name	ELE DIM BAL (2) 26W CFL (4-PIN) 120-277V
Pieces per Sku	1
Skus/Case	16
Bar code on pack	781087032817
Bar code on case	50781087032836
Logistics code(s)	913710213602
eop_net_weight_pp	0.305 kg

Dimensional drawing



MARK 7 0-10V ELE DIM BAL (2) 26W CFL (4-PIN) 120-277V

Product	A1 (Norm)	A2 (Norm)	A3 (Norm)	B1 (Norm)	C1 (Norm)
ELE DIM BAL (2) 26W CFL (4-PIN) 120-277V	4.55	4.20	2.00	3.00	1.29



© 2014 Koninklijke Philips N.V. (Royal Philips)
All rights reserved.

Specifications are subject to change without notice. Trademarks are the property of Koninklijke Philips N.V. (Royal Philips) or their respective owners.

www.philips.com/lighting

2014, February 1
data subject to change