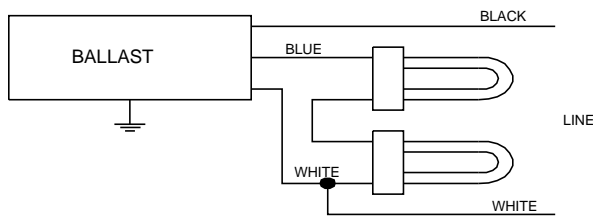


## Electrical Specifications

<b>H-2Q26-TP-BLS</b>	
Brand Name	COMPACT-HPF
Ballast Type	Magnetic
Starting Method	Pre-Heat
Lamp Connection	Series
Input Voltage	120
Input Frequency	60 HZ
Status	Active

Lamp Type	Num. of Lamps	Rated Lamp Watts	Min. Start Temp (°F/C)	Input Current (Amps)	Starting Current (Amps)	Open Circuit (Amps)	Input Power (Watts)	Ballast Factor	MAX THD %	Power Factor
CFM26W/GX24D	2	26	50/10	0.45	0.00	0.00	54	0.92	15	0.99
* CFQ26W/G24D	2	26	50/10	0.44	0.00	0.00	52	0.90	15	0.99

### Wiring Diagram



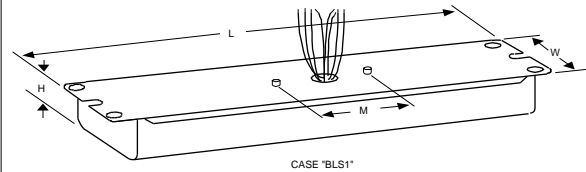
Diag. 50

The wiring diagram that appears above is for the lamp type denoted by the asterisk (\*)

### Standard Lead Length (inches)

	in.	cm.		in.	cm.
Black	7	17.8	Yellow/Blue		0
White	7	17.8	Blue/White		0
Blue	7	17.8	Brown		0
Red		0	Orange		0
Yellow		0	Orange/Black		0
Gray		0	Black/White		0
Violet		0	Red/White		0

### Enclosure



### Enclosure Dimensions

OverAll (L)	Width (std)/(TP)	Height (H)	Mounting (M)
8.5 "	2.3125 "	1.6875 "	2 "
8 1/2	2 5/16	1 11/16	2
21.6 cm	5.9 cm / 0 cm	4.3 cm	5.1 cm

Revised 07/10/2000



Data is based upon tests performed by Philips Lighting Electronics N.A. in a controlled environment and is representative of relative performance. Actual performance can vary depending on operating conditions. Specifications are subject to change without notice. All specifications are nominal unless otherwise noted.

## PHILIPS LIGHTING ELECTRONICS N.A.

10275 WEST HIGGINS ROAD · ROSEMONT, IL 60018

Tel: 800-322-2086 · Fax: 888-423-1882 · [www.philips.com/advance](http://www.philips.com/advance)

Customer Support/Technical Service: 800-372-3331 · OEM Support: 866-915-5886