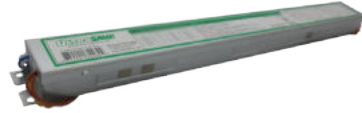


ER454120MHT-W-S



Ballast Type:	Electronic	Starting Method:	Programmed Start
Lamp Connection:	Two Series Circuits in Parallel	Input Voltage:	120 to 277
Input Frequency:	50/60 Hz	Sound Rating:	A
Remote Mounting:	18 ft Maximum	Warranty:	Five Years
End-of-Life Protection:	Yes	Max. Case Temperature:	90°C

ELECTRICAL SPECIFICATIONS

Lamp Type	# of Lamps	Rated Lamp Watts	Min. Start Temp. (°F/°C)	Input Current (Amps)	Input Power (Watts)	Ballast Factor	Max THD %	Power Factor	Max. L.C.C.F.	B.E.F
F54T5/54W	4	54	-20 / -29	2.00 / 0.88	240	1.00	10	0.99	1.50	0.42
	3			1.56 / 0.70	183	1.00				0.55
	2			1.00 / 0.44	120	1.00				0.83
	1			0.51 / 0.23	61	1.00	15	0.97		1.64
F54T5/49W	4	49		1.65 / 0.74	200	1.00	10	0.99		0.50
	3			1.37 / 0.61	159	1.00				0.63
	2			0.88 / 0.41	107	1.00				0.93
	1			0.45 / 0.20	52	1.00	15	0.97		1.92
F54T5/47W	4	47		1.82 / 0.80	200	1.00	10	0.99		0.50
	3			1.38 / 0.61	159	1.00				0.63
	2			0.91 / 0.40	106	1.00				0.94
	1			0.46 / 0.21	54	1.00	15	0.97		1.85
FT 55W	4	55		1.74 / 0.75	204	0.89	10	0.99		0.44
	2			0.87 / 0.38	102	0.89				0.87
FT 50W	4	50		1.96 / 0.60	235	1.10				0.47
	2			0.98 / 0.30	118	1.10				0.93

REGULATORY COMPLIANCE

- Meets ANSI Standard C82.11
- Meets ANSI Standard C62.41
- Meets FCC Part 18 Class A for EMI & RFI (Non-Consumer Limits)
- No PCB's
- cULus Listed (Class P, Type 1 Outdoor, Type HL)
- RoHS Compliant



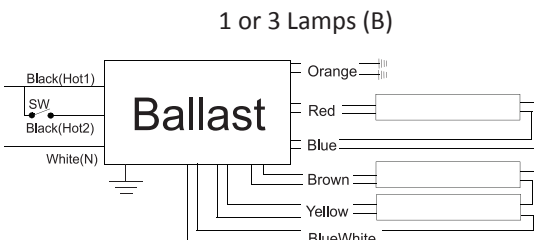
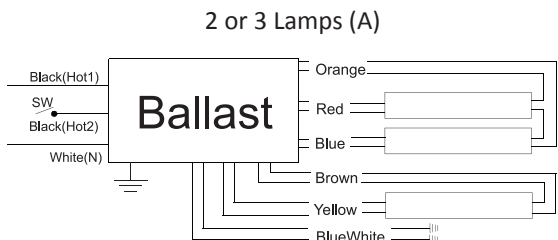
ULTRASAVE LIGHTING LTD.

12-140 AMBER STREET, MARKHAM, ON L3R 3J8 TEL 905.940.0888 FAX 905.940.0338 WWW.ULTRASAVE.CA

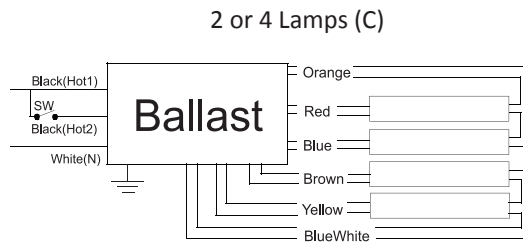
PHYSICAL CHARACTERISTICS

WIRING DIAGRAM T5HO

CASE DIMENSIONS



SW	(A) # Lamp ON	(B) # Lamp ON	(C) # Lamp ON
ON	3 Lamps ON	3 Lamps ON	4 Lamps ON
OFF	2 Lamps ON	1 Lamp ON	2 Lamps ON

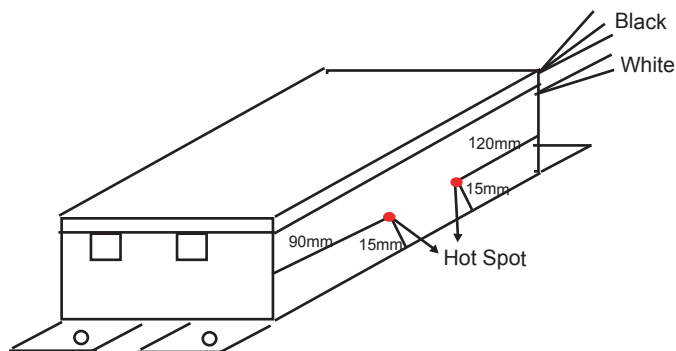


Overall (L)	17.71"
Width (W)	1.72"
Height (H)	1.18"
Mounting (M)	17.24"

LEAD LENGTH

Wire	Black	Black	White	Red	Orange	Blue	Brown	BlueWhite	Yellow
in	18	18	18	30	56	30	40	48	30

HOT SPOT LOCATION



ORDERING INFORMATION

Model #	Carton Weight	Carton Dimensions LxWxH	Carton Quantity	Skid Quantity
ER454120MHT-W-S	27.60 lbs	18.90" x 10.24" x 5.71"	10	500

ULTRASAVE LIGHTING LTD.

12-140 AMBER STREET, MARKHAM, ON L3R 3J8

TEL 905.940.0888

FAX 905.940.0338

WWW.ULTRASAVE.CA